

IT
EN

EDILIZIA
BUILDING



aluminium.taklergroup.com



Here **ALUMINIUM**
becomes **EXCELLENCE!**

TAKLER[®]
aluminium extrusion

ALUMINIUM EXTRUSION

/ INTRODUZIONE / INTRODUCTION

CHI SIAMO

Maestri
nell'estrusione di alluminio

ABOUT US

Masters
in aluminium extrusion



COSA PRODUCIAMO

Profili in alluminio ad alte prestazioni,
per vari settori di applicazione

WHAT WE DO

High-performance aluminium profiles
for a wide range of applications



COME OPERIAMO

Tecnologie avanzate, impianti digitalizzati,
competenze ingegneristiche

HOW WE WORK

Advanced technologies, digitized facilities
and engineering expertise



DOVE DISTRIBUIAMO

Esportiamo eccellenza
in 69 Paesi di 6 Continenti

WHERE WE DISTRIBUTE

We export excellence
to 69 countries across 6 continents



SEDE PRODUTTIVA

Matera, Basilicata
Italia

PRODUCTION SITE

Matera, Basilicata
Italy



/ IMPIANTO DI ESTRUSIONE / EXTRUSION PLANT

15k m²

STABILIMENTO PRODUTTIVO
PRODUCTION PLANT



2.5 t/h

CAPACITÀ PRODUTTIVA
PRODUCTION CAPACITY



FINO A
UP TO

415 mm

LARGHEZZA PROFILO
PROFILE WIDTH



FINO A
UP TO

14 m

LUNGHEZZA PROFILO
PROFILE LENGTH



2800 t

COMPRESIONE PRESSA
PRESS



/ PRODUZIONE STANDARD E PERSONALIZZATA / STANDARD AND CUSTOMIZED PRODUCTION



UN'OFFICINA
MATICI
DEDICATA
IN-HOUSE
DIE WORKSHOP



OLTRE 1.100
MATICI
DISPONIBILI
IN DOTAZIONE
OVER 1,100 DIES
AVAILABLE



PROGETTI
SU MISURA
PER OGNI
ESTRUSO
TAILOR-MADE
PROJECTS FOR
EACH EXTRUSION



CONTROLLO
COMPLETO
DELL'INTERO
PROCESSO
FULL
CONTROL
OF THE ENTIRE
PROCESS

/ TECNOLOGIE DI ESTRUSIONE / EXTRUSION TECHNOLOGIES

RAFFREDDAMENTO
AD ARIA
AIR-COOLING
QUENCHING



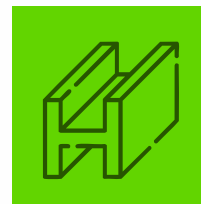
LEGHE EN AW SERIE
6060, 6005, 6063
e altre disponibili su richiesta
EN AW SERIES
6060, 6005, 6063
and others upon request

RAFFREDDAMENTO
AD ACQUA
WATER-COOLING
QUENCHING

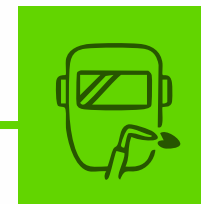


LEGHE EN AW SERIE
6082, 6061, 7075
e altre disponibili su richiesta
EN AW SERIES
6082, 6061, 7075
and others upon request

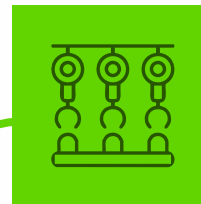
/ DALL'ESTRUSIONE ALLA CONSEGNA / FROM EXTRUSION TO DELIVERY



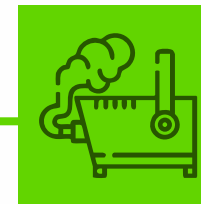
ESTRUSIONE
PROFILI
PROFILE
EXTRUSION



LAVORAZIONI
MECCANICHE
MECHANICAL
PROCESSING



ASSEMBLAGGIO
PROFILI ESTRUSI
ASSEMBLING
EXTRUDED PROFILES



TRATTAMENTI
SUPERFICIALI
SURFACE
TREATMENTS



IMBALLAGGI PROTETTIVI
PERSONALIZZATI
CUSTOMISED PROTECTIVE
PACKAGING



LOGISTICA
E TRASPORTO
LOGISTICS
AND TRANSPORTATION

/ SOSTENIBILITÀ / SUSTAINABILITY



90% ALLUMINIO RICICLATO EPD
RECYCLED EPD ALUMINIUM

RICICLO INFINITO
ENDLESS RECYCLABILITY



48% ENERGIA GREEN CONSUMATA
GREEN ENERGY USED

IMPATTO AMBIENTALE
ENVIRONMENTAL IMPACT



30% ENERGIA GREEN ACQUISTATA (GO)
GREEN ENERGY PURCHASED (GO)

STANDARD GARANTITI
GUARANTEED STANDARDS



26% ENERGIA GREEN PRODOTTA
GREEN ENERGY PRODUCED

PROCESSI RESPONSABILI
RESPONSIBLE PROCESSES



289 t EMISSIONI CO₂ RISPARMIATE
SAVED CO₂ EMISSIONS

OBIETTIVI MISURABILI
MEASURABLE GOALS

/ CONFORMITÀ / COMPLIANCE

/ EN 755 / EN 12020 / EN 573



NORME TECNICHE PER L'ALLUMINIO ESTRUSO
TECHNICAL REGULATIONS FOR EXTRUDED ALUMINIUM



ISO 9001

SISTEMA DI GESTIONE DELLA QUALITÀ
QUALITY MANAGEMENT SYSTEM



IATF 16949

STANDARD QUALITÀ SETTORE AUTOMOTIVE
AUTOMOTIVE QUALITY STANDARD



ISO 14001

SISTEMA DI GESTIONE AMBIENTALE
ENVIRONMENTAL MANAGEMENT SYSTEM



/ QualiCoat / QualiAnod / QualiSteel

STANDARD EUROPEI PER I TRATTAMENTI SUPERFICIALI DEI METALLI
EUROPEAN STANDARDS FOR METAL SURFACE TREATMENTS



EPD

DICHIARAZIONE AMBIENTALE DI PRODOTTO
ENVIRONMENTAL PRODUCT DECLARATION



Carbon Footprint

VALUTAZIONE DELL'IMPRONTA DI CARBONIO
CARBON FOOTPRINT ASSESSMENT



/ REACH / RoHS

CONFORMITÀ AMBIENTALE E SOSTANZE PERICOLOSE
ENVIRONMENTAL AND HAZARDOUS SUBSTANCES AND CHEMICALS COMPLIANCE

/ CATEGORIE PROFILI / PROFILE CATEGORIES

1

/ PROFILI PER FINESTRE
/ WINDOW PROFILES



2

/ PROFILI PER RINGHIERE
/ HOUSE RAILING PROFILES



3

/ PROFILI PER STRUTTURE COMMERCIALI
/ COMMERCIAL STRUCTURES PROFILES



4

/ PROFILI PERSONALIZZATI
/ CUSTOM PROFILES



5

/ PROFILI STANDARD
/ STANDARD PROFILES



1

/ PROFILI
PER FINESTRE
/ WINDOW
PROFILES

/ Profili referenziali
/ Reference profiles

Telaio T
Frame T



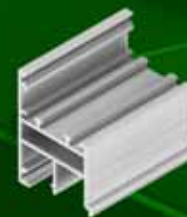
Telaio L
Frame L



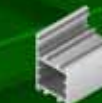
Telaio Z
Frame Z



Riporto centrale
Additional central fill



Altri telai
Other frames



2

**/ PROFILI
PER RINGHIERE**
*/ HOUSE RAILING
PROFILES*

*/ Profili referenziali
/ Reference profiles*

3

**/ PROFILI
PER STRUTTURE COMMERCIALI**
*/ COMMERCIAL STRUCTURES
PROFILES*

*/ Profili referenziali
/ Reference profiles*

*/ PROFILI PER PERSIANE
/ WINDOW ROLLING SHUTTER PROFILES*

*/ PROFILI PER ZANZARIERE
/ MOSQUITO SCREEN PROFILES*

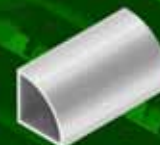
Piantone tubo rettangolo
Rectangular mullion rube



Barrette tubi
Tubes



Tubo angolare
Angular tube



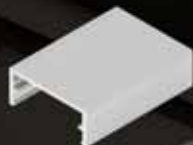
Scuretti
Shutter slats



Lamelle
Louvers



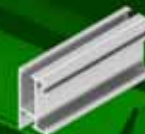
Sotto corrimano
Under handrail



Corrimano
Handrails



Telaio zanzariera
*Frame
for mosquito screen*

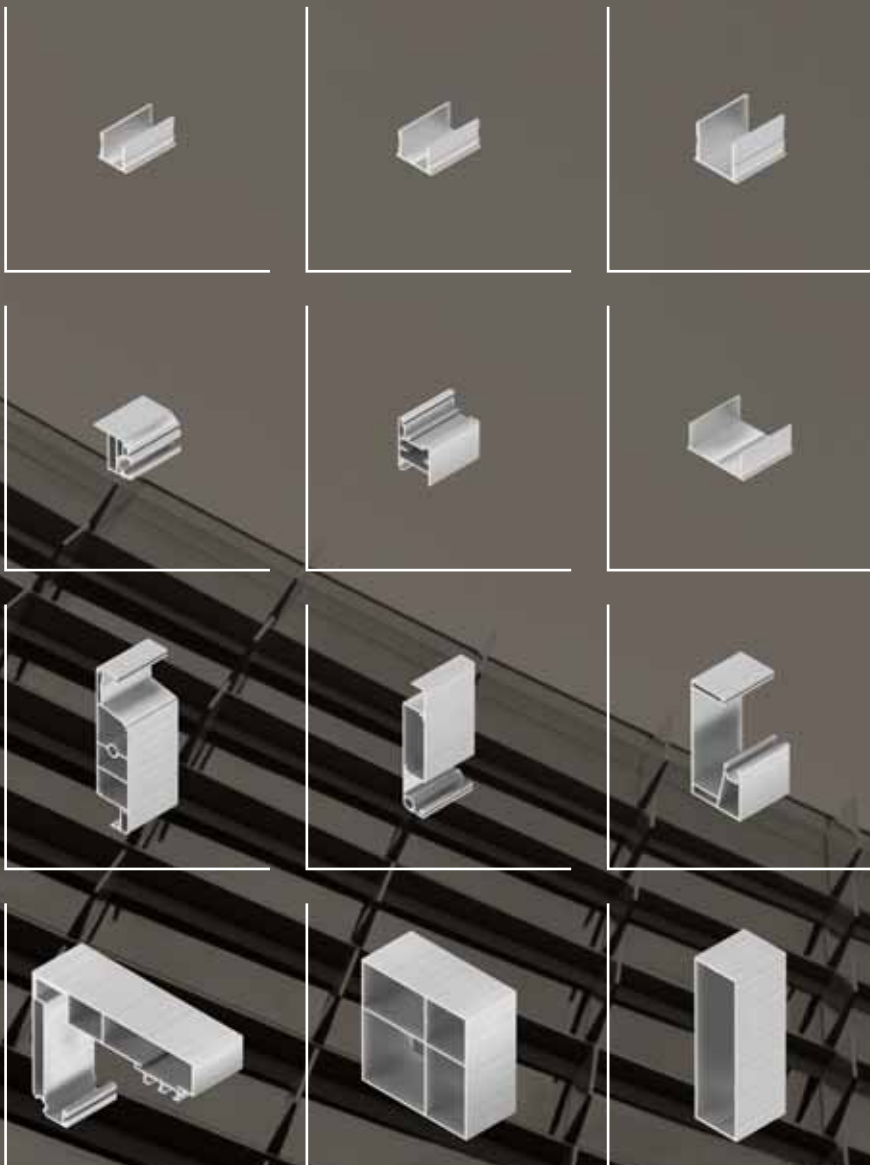


Traverso zanzariera
*Horizontal profile
for mosquito screen*



4









**/ PROFILI
PERSONALIZZATI**
*/ CUSTOM
PROFILES*



5

**/ PROFILI
STANDARD**
*/ STANDARD
PROFILES*

/ Profili referenziali
/ Reference profiles

<p>/ ANGOLARI LATI UGUALI <i>/ ANGULARS EQUAL SIDES</i></p> 	<p>/ PROFILI AD "U" LATI UGUALI <i>/ U PROFILES EQUAL SIDES</i></p> 	<p>/ TUBI QUADRI <i>/ SQUARE TUBES</i></p> 	<p>/ TUBI TONDI <i>/ ROUND TUBES</i></p> 
<p>/ ANGOLARI LATI DISUGUALI <i>/ ANGULARS UNEQUAL SIDES</i></p> 	<p>/ PROFILI AD "U" LATI DISUGUALI <i>/ U PROFILES UNEQUAL SIDES</i></p> 	<p>/ TUBI RETTANGOLARI <i>/ RECTANGULAR TUBES</i></p> 	<p>/ TUBI PIATTI <i>/ PLATES</i></p> 

**/ DIAMO FORMA
ALLE IDEE**
*/ WE SHAPE
IDEAS*

/ CO-PROGETTAZIONE
/ CO-DESIGN

/ PROTOTIPAZIONE RAPIDA
/ RAPID PROTOTYPING

/ PERSONALIZZAZIONE
/ TAILORED CUSTOMIZATION

/ SCALABILITÀ INDUSTRIALE
/ INDUSTRIAL SCALABILITY

/ INTEGRAZIONE DI FUNZIONI
/ FUNCTION INTEGRATION

/ CONSULENZA TECNICA
/ TECHNICAL CONSULTING

/ OTTIMIZZAZIONE PRODUTTIVA
/ PRODUCTION OPTIMIZATION

/ COMPATIBILITÀ MULTI-MATERIALE
/ MULTI-MATERIAL COMPATIBILITY

